

# 2000 Neighborhood Park Improvement Bond

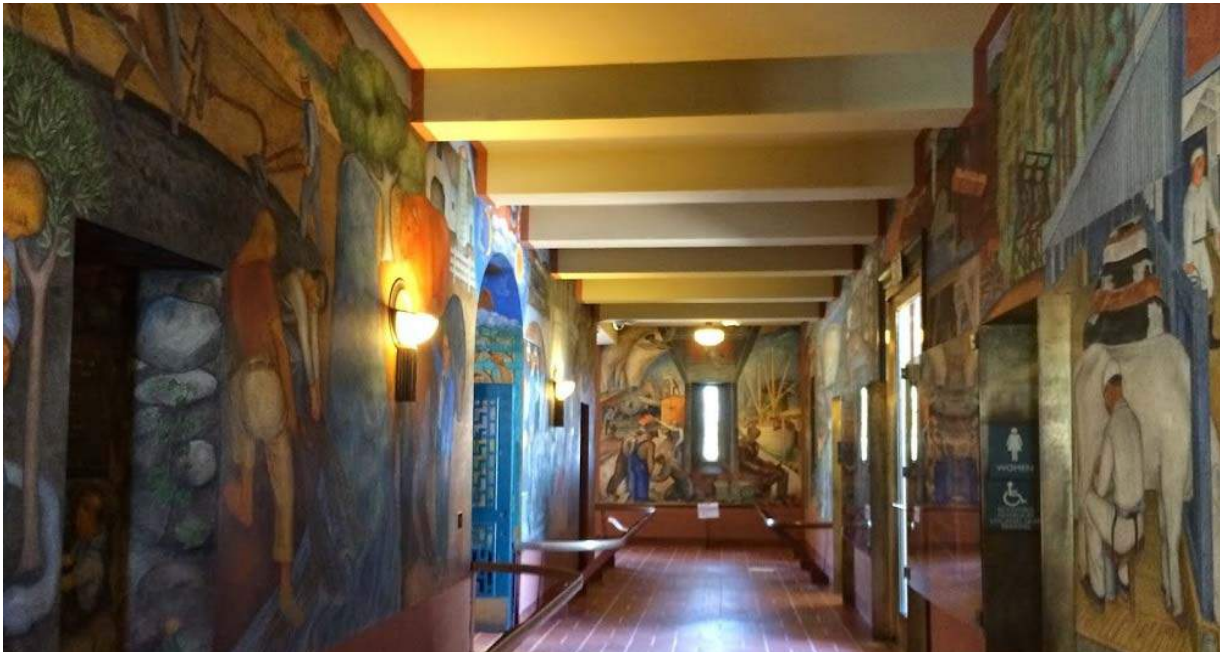
QUARTERLY STATUS REPORT  
PRESENTED TO THE

Citizens' General Obligation Bond Oversight Committee

December 2014



Minnie and Lovie Ward Rec Center - Children's Play Area



PREPARED BY

Terence Chow, Recreation & Parks Department, Accountant, [Terence.chow@sfgov.org](mailto:Terence.chow@sfgov.org)  
Maureen Devlin, Recreation & Parks Department, Analyst [Maureen.devlin@sfgov.org](mailto:Maureen.devlin@sfgov.org)

PRESENTED BY

Dawn Kamalanathan, Recreation & Parks Department, Director of Planning & Capital Management,  
581-2544, [Dawn.kamalanathan@sfgov.org](mailto:Dawn.kamalanathan@sfgov.org)

# Neighborhood Park Improvement Bond

Citizens' General Obligation Bond Oversight Committee

December 2014

## TABLE OF CONTENTS

### Executive Summary

- Program Background ..... 1
- Program Budgets and Funding ..... 1
- Program Schedule ..... 2
- Project Status Summaries ..... 3
- Program Management Activities ..... 4

**Program Scope of Work** ..... 5

### Program Budgets

- Program Revenues ..... 8
- Program Expenditures ..... 10

## Executive Summary

### Program Background

- In March of 2000 the citizens of San Francisco passed Proposition A, a \$110 Million General Obligation Bond, for the acquisition, construction and/or reconstruction of San Francisco Parks and Recreation facilities.
- The projects completed under the Neighborhood Park Program are defined and scheduled in the Department's Capital Plan. This plan is mandated under Article XVI, Section 16.107. Park, Recreation and Open Space Fund, of the San Francisco Charter. The Plan is updated annually by the Capital Improvement Division, and each update is subsequently adopted by the Recreation and Park Commission.
- Eighty-one (81) capital projects and three (3) acquisitions have received funding from the 2000 Neighborhood Park Improvement Bond. These eighty-four (84) projects constitute the Neighborhood Park (NP) Bond Program.

### Program Budgets and Funding

- The NP Bond Program was officially initiated in June 2000 with the first sale of \$6.1M in Neighborhood Park Bonds.
- The total \$110M appropriation has now been sold. The sale schedule and amount of each sale are as follows:

1 <sup>st</sup> Sale	June 2000	\$6,180,000
2 <sup>nd</sup> Sale	February 2001	\$14,060,000
3 <sup>rd</sup> Sale	June 2003	\$10,360,000
4 <sup>th</sup> Sale	June 2003	\$10,600,000
5 <sup>th</sup> Sale	November 2004	\$68,800,000
Interest		\$9,878,348
<b>TOTAL</b>		<b>\$119,878,348</b>

### Budgets

- The *Original/Baseline Budget* for the program was \$236,390,389. Increases over the baseline budgets were due to changes in bid results and unforeseen conditions during construction phase that resulted in additional funding.
- The *Current Approved Budget* for the program is as follows:

Project Costs	\$271,368,740
Program Wide Costs	\$3,347,235
<b>Total for Program</b>	<b>\$274,715,975</b>

- Program Wide costs represent 1.23% of the overall program costs.



Boeddeker Park's reopening was celebrated on December 10, 2014. The Park and Clubhouse renovation was a partnership with the Trust for Public Land, and the improved facility provides daily recreational and educational activities, serving the many families of the Tenderloin neighborhood.

### Funding

- The total appropriated funding for the NP Bond Program stands as follows:

<b>2000 NP Bonds</b>	<b>\$119,878,348</b>
Open Space Funds	\$23,815,053
Revenue Bonds	\$42,474,908
Gifts /Grants	\$33,592,510
Other Sources	\$54,955,156
<b>Total</b>	<b>\$274,715,975</b>

- Lease Revenue Bonds provided additional financing for eight projects that initially received NP Bond funds: Chinese Recreation Center, Hamilton Recreation Center, Larsen Sava Pool, Moscone Recreation Center, Junipero Serra Playground/Clubhouse, Buena Vista Park Landscape, St. Mary's Playground and Kellogg Velasco Park.

## Executive Summary

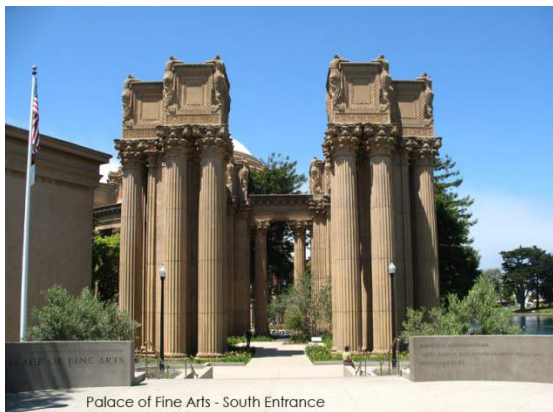
- The 2008 Clean & Safe Neighborhood Park Bond has provided additional financing for 2 projects that initially received NP Bond Funds: Chinese Recreation Center and Mission Dolores Playground.
- The Mission Dolores Playground has received a pledge of private gifts from the Friends of Dolores Park of \$1,600,000 to be used as joint funding with City bond funds and other sources to accomplish the renovation of the playground.

### Program Schedule

- The NP Bond Program was officially initiated in June 2000 with the first sale of \$6.1M in Neighborhood Park Bonds. However, some projects that were already active in 2000 received bond funding, and are therefore included in the program.

As of December 30, 2014, there are eight active bond projects:

- (1) Coit Tower Renovation
- (2) Great Highway Restrooms
- (3) Carl Larsen Park
- (4) Randall Museum
- (5) Crocker Amazon lighting
- (6) Civic Center Garage elevator



Palace of Fine Arts Restoration reopened to the Public in January 14, 2011.



Buena Vista Landscape Improvement reopened to the Public in January 23, 2010.



St. Mary's Playground reopened to the Public in July 25, 2009

## Project Status Summaries

### Project Status Summaries

- The following five (5) projects are active in Construction:

1. Civic Center Garage Elevator
2. Carl Larsen Park
3. Great Highway Restrooms
4. Crocker Amazon Lighting
5. Randall Museum

- The following seventy-nine (79) projects are Completed:

1. Argonne Playground & Clubhouse
2. Rochambeau Playground & Clubhouse
3. Rossi Playground – Children’s Play Structure
4. Moscone Playground – Children’s Play Structure
5. Palace of Fine Arts Park (includes Lagoon)
6. Chinese Recreation Center
7. Fay Park – Garden
8. Helen Wills Park & Clubhouse
9. North Beach Playground – Pool & Clubhouse
10. St. Mary’s Square
11. Parkside Square – Children’s Play Structure / Landscape
12. Larsen Park Sava Pool
13. Stern Grove – Concert Meadow
14. South Sunset Playground – Children’s Play Structure
15. Stern Grove – Master Plan
16. West Sunset Playground – Fence Replacement
17. Alamo Square – Children’s Play Structure
18. Hamilton Playground & Recreation Center
19. Koshland Park
20. J.P. Murphy Playground & Clubhouse

21. Franklin Square & Youngblood Coleman- Field Rehab
22. Kid Power (Hoff St.) Park
23. Aptos Playground
24. Balboa Park – Restroom
25. Hawk Hill – Acquisition
26. Junipero Serra Playground & Clubhouse
27. West Portal Playground/Clubhouse
28. Buena Vista Park Landscape Imp Clubhouse
29. Douglass Playground
30. Eureka Valley Playground – Recreation Center
31. Glen Park Playground – Canyon & Assessment
32. Noe Courts Retaining Wall
33. Randall Museum – Grounds
34. Sunnyside Conservatory
35. Upper Noe Playground & Recreation Center
36. Upper Noe Dog Park
37. Walter Haas Playground
38. 24 <sup>th</sup> Street Mini Park
39. Bernal Heights Park (Phases I)
40. Bernal Heights Park (Phases II)
41. Garfield Square – Children’s Play Structure & Playfield
42. Garfield Square – Master Plan
43. Holly Park
44. Mission Pool
45. Parque Ninos Unidos – Clubhouse
46. Rolph Park Playground & Clubhouse
47. St. Mary’s Playground – Dog Park
48. St. Mary’s Playground
49. Bayview Playground – Martin Luther King, Jr., Pool
50. Esprit Park Landscaping & Improvements
51. Herz Playground – Coffman Pool
52. McLaren Park – Acquisition
53. Potrero del Sol
54. Visitacion Valley Greenway(ReisTract)- Senior Park
55. Visitacion Valley Greenway (ReisTract)- Tioga Lot
56. Visitacion Valley Greenway(ReisTract)- Campbell/Rutland Master Plan

## Project Status Summaries

57. Visitacion Valley Playground – Clubhouse
58. Crocker Amazon Playground – Children’s Play Structure
59. Excelsior Playground
60. Lessing/Sears Mini Park
61. Alta Plaza Park – Children’s Play Structure
62. Moscone Recreation Center
63. McLaren Park – Yosemite Marsh Renovation
64. Pine Lake Park – Meadow
65. Victoria Manalo Draves (SOMA) Park
66. Sunnyside Clubhouse & Playground (Phase I)
67. Sunnyside Clubhouse & Playground (Phase II)
68. Joseph Lee Playground & Recreation Center
69. Kelloch – Velasco Park
70. Mission Dolores Park – Clubhouse
71. North Beach Playground – Master Plan (WSQ)
72. Palace of Fine Arts-Landscape
73. Duboce Park – Harvey Milk Center
74. Mission Dolores Helen Diller Playground
75. Balboa Park Improvements
76. Lake Merced Boathouse
77. Minnie & Lovie Ward (Oceanview) Recreation Center – Playfield
78. Boeddeker Park
79. Coit Tower

### Program Management Activities

- With the conclusion of the 2000 Bond program, staff completed a comprehensive reconciliation and review of all sources supplementing bond funds including: gifts, grants, lease revenue bonds, General Fund, and Open Space funds. Projects were closed out, and the reconciliation yielded a net total of \$5,595,792 in project balances and interest earnings.
- Staff re-appropriated the \$5.6M in remainders from completed projects into a Master Project for subsequent allocation. The 2000 Bond has only one restriction: that it not be used on projects in Golden Gate Park. To date, the RPD Commission has approved allocations to close funding gaps in current, active projects at: Coit Tower Randall Museum, Crocker Amazon, Carl Larsen Playground, Lake Merced Boathouse, Balboa Park, and the Great Highway Restrooms. As of December 31, 2014, the 2000 Bond funds have been fully allocated, and have funded work at Fay House (Stabilization), Balboa Park, Boeddeker Park, and Civic Center Elevators.

- The following one (1) project is on hold, pending funding availability:

1. Geneva Car Barn
--------------------

- The following four (4) projects have been Cancelled:

1. Balboa Park – Master Plan
2. Midtown Terrace Reservoir Top
3. Buena Vista Park – Master Plan
4. Youngblood-Coleman Playground – Clubhouse

## Program Scope of Work

The bond program includes site acquisition, renovation and new construction at 67 park sites (some sites received multiple projects). Program scope includes renovations, improvements to, or new construction of:

1. Playgrounds and play areas (Playground);
2. Fields and Courts (F/C);
3. Recreation Centers (RC);
4. Community Pools (Pool),
5. Clubhouses (CH); and
6. Landscaping and other Park amenities (Park).

In addition, funded scope may include:

7. Site Acquisition (ACQ); or
8. Master Planning activities (MP).

An over-view of the scope of work at each site, funded with 2000 Neighborhood Park Improvement Bonds, is as follows:

	Playground	F/C	Pool	RC	CH	Park	ACQ	MP
1. 24 <sup>th</sup> Street Mini Park	•					•		
2. Alamo Square	•							
3. Alta Plaza Park	•							
4. Aptos Playground	•							
5. Argonne Playground	•				•			
6. Balboa Park						•		
7. Balboa Park								•
8. Bayview Playground – Martin Luther King, Jr., Pool			•					
9. Bernal Heights Park						•		
10. Boeddeker Park	•				•	•		
11. Buena Vista Park						•		
12. Chinese Recreation Center	•			•				
13. Civic Center Garage Elevator						•		
14. Crocker Amazon Playground	•							
15. Coit Tower						•		
16. Douglass Playground						•		
17. Esprit Park						•	•	
18. Eureka Valley Playground & Rec Center	•			•				
19. Excelsior Playground	•							

**Program Scope of Work**

	Playg round	F/C	Pool	RC	CH	Park	ACQ	MP
20. Fay Park						•		
21. Franklin Square		•						
22. Garfield Square	•	•						•
23. Geneva Car Barn						•		
24. Glen Park								•
25. Great Highway Restrooms						•		
26. Hawk Hill							•	
27. Harvey Milk Recreation Center				•				
28. Hamilton Playground, Rec Center & Pool	•		•	•				
29. Helen Wills Park					•	•		
30. Herz Playground (Coffman Pool)			•					
31. Holly Park						•		
32. J.P. Murphy Playground	•	•			•			
33. Joseph Lee Playground & Rec Center	•			•				
34. Junipero Serra Playground	•				•			
35. Kid Power Park	•							
36. Kelloch – Velasco Park						•		
37. Koshland Park						•		
38. Larsen Park (Sava Pool)			•					
39. Larsen Park (Playground)	•							
40. Lessing/Sears Mini Park						•		
41. McLaren Park						•	•	
42. Mission Pool			•					
43. Mission Dolores Park	•				•			
44. Moscone Playground and Rec Center	•			•				
45. Noe Courts						•		
46. North Beach Playground	•		•	•				•
47. Minnie & Lovie Ward (Oceanview) Playground, Rec Center, and playfield	•			•	•			
48. Palace of Fine Arts						•		



**Program Scope of Work**

	Playg round	F/C	Pool	RC	CH	Park	ACQ	MP
49. Parkside Square	•					•		
50. Parque Ninos Unidos					•			
51. Pine Lake Park						•		
52. Potrero del Sol						•		
53. Randall Museum						•		
54. Rochambeau Playground	•				•			
55. Rolph Park	•				•			
56. Rossi Playground	•							
57. Victoria Manalo Draves (SOMA) Park						•		
58. South Sunset Playground	•							
59. St. Mary's Playground	•					•		
60. St. Mary's Square						•		
61. Stern Grove						•		•
62. Sunnyside Conservatory						•		
63. Sunnyside Playground	•				•			
64. Upper Noe Playground	•			•		•		
65. Visitacion Valley Greenway – Senior Park						•		
66. Visitacion Valley Greenway – Tioga Lot						•		
67. Visitacion Valley Greenway –Campbell/Rutland Master Plan	•					•		•
68. Visitacion Valley Playground	•				•			
69. Walter Haas Playground	•							
70. West Portal Playground	•				•			
71. West Sunset Playground						•		
72. Youngblood Coleman		•						

# Neighborhood Park Improvement Bond

Citizens' General Obligation Bond Oversight Committee

December 2014

## TABLE OF CONTENTS

### Executive Summary

- Program Background ..... 1
- Program Budgets and Funding ..... 1
- Program Schedule ..... 2
- Project Status Summaries ..... 3
- Program Management Activities ..... 4

**Program Scope of Work** ..... 5

### Program Budgets

- Program Revenues ..... 8
- Program Expenditures ..... 10

## Executive Summary

### Program Background

- In March of 2000 the citizens of San Francisco passed Proposition A, a \$110 Million General Obligation Bond, for the acquisition, construction and/or reconstruction of San Francisco Parks and Recreation facilities.
- The projects completed under the Neighborhood Park Program are defined and scheduled in the Department's Capital Plan. This plan is mandated under Article XVI, Section 16.107. Park, Recreation and Open Space Fund, of the San Francisco Charter. The Plan is updated annually by the Capital Improvement Division, and each update is subsequently adopted by the Recreation and Park Commission.
- Eighty-one (81) capital projects and three (3) acquisitions have received funding from the 2000 Neighborhood Park Improvement Bond. These eighty-four (84) projects constitute the Neighborhood Park (NP) Bond Program.

### Program Budgets and Funding

- The NP Bond Program was officially initiated in June 2000 with the first sale of \$6.1M in Neighborhood Park Bonds.
- The total \$110M appropriation has now been sold. The sale schedule and amount of each sale are as follows:

1 <sup>st</sup> Sale	June 2000	\$6,180,000
2 <sup>nd</sup> Sale	February 2001	\$14,060,000
3 <sup>rd</sup> Sale	June 2003	\$10,360,000
4 <sup>th</sup> Sale	June 2003	\$10,600,000
5 <sup>th</sup> Sale	November 2004	\$68,800,000
Interest		\$9,878,348
<b>TOTAL</b>		<b>\$119,878,348</b>

### Budgets

- The *Original/Baseline Budget* for the program was \$236,390,389. Increases over the baseline budgets were due to changes in bid results and unforeseen conditions during construction phase that resulted in additional funding.
- The *Current Approved Budget* for the program is as follows:

Project Costs	\$271,368,740
Program Wide Costs	\$3,347,235
<b>Total for Program</b>	<b>\$274,715,975</b>

- Program Wide costs represent 1.23% of the overall program costs.



Boeddeker Park's reopening was celebrated on December 10, 2014. The Park and Clubhouse renovation was a partnership with the Trust for Public Land, and the improved facility provides daily recreational and educational activities, serving the many families of the Tenderloin neighborhood.

### Funding

- The total appropriated funding for the NP Bond Program stands as follows:

<b>2000 NP Bonds</b>	<b>\$119,878,348</b>
Open Space Funds	\$23,815,053
Revenue Bonds	\$42,474,908
Gifts /Grants	\$33,592,510
Other Sources	\$54,955,156
<b>Total</b>	<b>\$274,715,975</b>

- Lease Revenue Bonds provided additional financing for eight projects that initially received NP Bond funds: Chinese Recreation Center, Hamilton Recreation Center, Larsen Sava Pool, Moscone Recreation Center, Junipero Serra Playground/Clubhouse, Buena Vista Park Landscape, St. Mary's Playground and Kellogg Velasco Park.

## Executive Summary

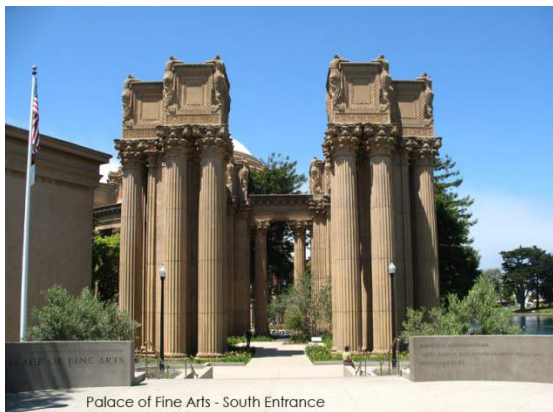
- The 2008 Clean & Safe Neighborhood Park Bond has provided additional financing for 2 projects that initially received NP Bond Funds: Chinese Recreation Center and Mission Dolores Playground.
- The Mission Dolores Playground has received a pledge of private gifts from the Friends of Dolores Park of \$1,600,000 to be used as joint funding with City bond funds and other sources to accomplish the renovation of the playground.

### Program Schedule

- The NP Bond Program was officially initiated in June 2000 with the first sale of \$6.1M in Neighborhood Park Bonds. However, some projects that were already active in 2000 received bond funding, and are therefore included in the program.

As of December 30, 2014, there are eight active bond projects:

- (1) Coit Tower Renovation
- (2) Great Highway Restrooms
- (3) Carl Larsen Park
- (4) Randall Museum
- (5) Crocker Amazon lighting
- (6) Civic Center Garage elevator



Palace of Fine Arts Restoration reopened to the Public in January 14, 2011.



Buena Vista Landscape Improvement reopened to the Public in January 23, 2010.



St. Mary's Playground reopened to the Public in July 25, 2009

## Project Status Summaries

### Project Status Summaries

- The following five (5) projects are active in Construction:

1. Civic Center Garage Elevator
2. Carl Larsen Park
3. Great Highway Restrooms
4. Crocker Amazon Lighting
5. Randall Museum

- The following seventy-nine (79) projects are Completed:

1. Argonne Playground & Clubhouse
2. Rochambeau Playground & Clubhouse
3. Rossi Playground – Children’s Play Structure
4. Moscone Playground – Children’s Play Structure
5. Palace of Fine Arts Park (includes Lagoon)
6. Chinese Recreation Center
7. Fay Park – Garden
8. Helen Wills Park & Clubhouse
9. North Beach Playground – Pool & Clubhouse
10. St. Mary’s Square
11. Parkside Square – Children’s Play Structure / Landscape
12. Larsen Park Sava Pool
13. Stern Grove – Concert Meadow
14. South Sunset Playground – Children’s Play Structure
15. Stern Grove – Master Plan
16. West Sunset Playground – Fence Replacement
17. Alamo Square – Children’s Play Structure
18. Hamilton Playground & Recreation Center
19. Koshland Park
20. J.P. Murphy Playground & Clubhouse

21. Franklin Square & Youngblood Coleman- Field Rehab
22. Kid Power (Hoff St.) Park
23. Aptos Playground
24. Balboa Park – Restroom
25. Hawk Hill – Acquisition
26. Junipero Serra Playground & Clubhouse
27. West Portal Playground/Clubhouse
28. Buena Vista Park Landscape Imp Clubhouse
29. Douglass Playground
30. Eureka Valley Playground – Recreation Center
31. Glen Park Playground – Canyon & Assessment
32. Noe Courts Retaining Wall
33. Randall Museum – Grounds
34. Sunnyside Conservatory
35. Upper Noe Playground & Recreation Center
36. Upper Noe Dog Park
37. Walter Haas Playground
38. 24 <sup>th</sup> Street Mini Park
39. Bernal Heights Park (Phases I)
40. Bernal Heights Park (Phases II)
41. Garfield Square – Children’s Play Structure & Playfield
42. Garfield Square – Master Plan
43. Holly Park
44. Mission Pool
45. Parque Ninos Unidos – Clubhouse
46. Rolph Park Playground & Clubhouse
47. St. Mary’s Playground – Dog Park
48. St. Mary’s Playground
49. Bayview Playground – Martin Luther King, Jr., Pool
50. Esprit Park Landscaping & Improvements
51. Herz Playground – Coffman Pool
52. McLaren Park – Acquisition
53. Potrero del Sol
54. Visitacion Valley Greenway(ReisTract)- Senior Park
55. Visitacion Valley Greenway (ReisTract)- Tioga Lot
56. Visitacion Valley Greenway(ReisTract)- Campbell/Rutland Master Plan

## Project Status Summaries

57. Visitacion Valley Playground – Clubhouse
58. Crocker Amazon Playground – Children’s Play Structure
59. Excelsior Playground
60. Lessing/Sears Mini Park
61. Alta Plaza Park – Children’s Play Structure
62. Moscone Recreation Center
63. McLaren Park – Yosemite Marsh Renovation
64. Pine Lake Park – Meadow
65. Victoria Manalo Draves (SOMA) Park
66. Sunnyside Clubhouse & Playground (Phase I)
67. Sunnyside Clubhouse & Playground (Phase II)
68. Joseph Lee Playground & Recreation Center
69. Kellogg – Velasco Park
70. Mission Dolores Park – Clubhouse
71. North Beach Playground – Master Plan (WSQ)
72. Palace of Fine Arts-Landscape
73. Duboce Park – Harvey Milk Center
74. Mission Dolores Helen Diller Playground
75. Balboa Park Improvements
76. Lake Merced Boathouse
77. Minnie & Lovie Ward (Oceanview) Recreation Center – Playfield
78. Boeddeker Park
79. Coit Tower

### Program Management Activities

- With the conclusion of the 2000 Bond program, staff completed a comprehensive reconciliation and review of all sources supplementing bond funds including: gifts, grants, lease revenue bonds, General Fund, and Open Space funds. Projects were closed out, and the reconciliation yielded a net total of \$5,595,792 in project balances and interest earnings.
- Staff re-appropriated the \$5.6M in remainders from completed projects into a Master Project for subsequent allocation. The 2000 Bond has only one restriction: that it not be used on projects in Golden Gate Park. To date, the RPD Commission has approved allocations to close funding gaps in current, active projects at: Coit Tower Randall Museum, Crocker Amazon, Carl Larsen Playground, Lake Merced Boathouse, Balboa Park, and the Great Highway Restrooms. As of December 31, 2014, the 2000 Bond funds have been fully allocated, and have funded work at Fay House (Stabilization), Balboa Park, Boeddeker Park, and Civic Center Elevators.

- The following one (1) project is on hold, pending funding availability:

1. Geneva Car Barn
--------------------

- The following four (4) projects have been Cancelled:

1. Balboa Park – Master Plan
2. Midtown Terrace Reservoir Top
3. Buena Vista Park – Master Plan
4. Youngblood-Coleman Playground – Clubhouse

## Program Scope of Work

The bond program includes site acquisition, renovation and new construction at 67 park sites (some sites received multiple projects). Program scope includes renovations, improvements to, or new construction of:

1. Playgrounds and play areas (Playground);
2. Fields and Courts (F/C);
3. Recreation Centers (RC);
4. Community Pools (Pool),
5. Clubhouses (CH); and
6. Landscaping and other Park amenities (Park).

In addition, funded scope may include:

7. Site Acquisition (ACQ); or
8. Master Planning activities (MP).

An over-view of the scope of work at each site, funded with 2000 Neighborhood Park Improvement Bonds, is as follows:

	Playground	F/C	Pool	RC	CH	Park	ACQ	MP
1. 24 <sup>th</sup> Street Mini Park	•					•		
2. Alamo Square	•							
3. Alta Plaza Park	•							
4. Aptos Playground	•							
5. Argonne Playground	•				•			
6. Balboa Park						•		
7. Balboa Park								•
8. Bayview Playground – Martin Luther King, Jr., Pool			•					
9. Bernal Heights Park						•		
10. Boeddeker Park	•				•	•		
11. Buena Vista Park						•		
12. Chinese Recreation Center	•			•				
13. Civic Center Garage Elevator						•		
14. Crocker Amazon Playground	•							
15. Coit Tower						•		
16. Douglass Playground						•		
17. Esprit Park						•	•	
18. Eureka Valley Playground & Rec Center	•			•				
19. Excelsior Playground	•							

**Program Scope of Work**

	Playg round	F/C	Pool	RC	CH	Park	ACQ	MP
20. Fay Park						•		
21. Franklin Square		•						
22. Garfield Square	•	•						•
23. Geneva Car Barn						•		
24. Glen Park								•
25. Great Highway Restrooms						•		
26. Hawk Hill							•	
27. Harvey Milk Recreation Center				•				
28. Hamilton Playground, Rec Center & Pool	•		•	•				
29. Helen Wills Park					•	•		
30. Herz Playground (Coffman Pool)			•					
31. Holly Park						•		
32. J.P. Murphy Playground	•	•			•			
33. Joseph Lee Playground & Rec Center	•			•				
34. Junipero Serra Playground	•				•			
35. Kid Power Park	•							
36. Kelloch – Velasco Park						•		
37. Koshland Park						•		
38. Larsen Park (Sava Pool)			•					
39. Larsen Park (Playground)	•							
40. Lessing/Sears Mini Park						•		
41. McLaren Park						•	•	
42. Mission Pool			•					
43. Mission Dolores Park	•				•			
44. Moscone Playground and Rec Center	•			•				
45. Noe Courts						•		
46. North Beach Playground	•		•	•				•
47. Minnie & Lovie Ward (Oceanview) Playground, Rec Center, and playfield	•			•	•			
48. Palace of Fine Arts						•		



**Program Scope of Work**

	Playg round	F/C	Pool	RC	CH	Park	ACQ	MP
49. Parkside Square	•					•		
50. Parque Ninos Unidos					•			
51. Pine Lake Park						•		
52. Potrero del Sol						•		
53. Randall Museum						•		
54. Rochambeau Playground	•				•			
55. Rolph Park	•				•			
56. Rossi Playground	•							
57. Victoria Manalo Draves (SOMA) Park						•		
58. South Sunset Playground	•							
59. St. Mary's Playground	•					•		
60. St. Mary's Square						•		
61. Stern Grove						•		•
62. Sunnyside Conservatory						•		
63. Sunnyside Playground	•				•			
64. Upper Noe Playground	•			•		•		
65. Visitacion Valley Greenway – Senior Park						•		
66. Visitacion Valley Greenway – Tioga Lot						•		
67. Visitacion Valley Greenway –Campbell/Rutland Master Plan	•					•		•
68. Visitacion Valley Playground	•				•			
69. Walter Haas Playground	•							
70. West Portal Playground	•				•			
71. West Sunset Playground						•		
72. Youngblood Coleman		•						

**Program Budget Reports - Revenues as of December 31, 2014**

	2000 NP BONDS	OPEN SPACE FUNDS	REVENUE BONDS	GIFTS	GRANTS	GENERAL FUNDS	DOWNTOWN PARK FUNDS	OTHER CITY DEPT FUNDS	TOTAL ALL SOURCES
<b>ACQUISITIONS</b>									
7 Hawk Hill - Acquisition	345,000	3,024,655	-	-	-	-	-	-	3,369,655
10 Esprit Park Landscaping & Improvements	80,675	591,360	-	-	-	-	-	-	672,035
10 McLaren Park - Acquisition	247,500	-	-	-	-	-	-	-	247,500
<b>SUBTOTAL FOR ACQUISITIONS</b>	<b>673,175</b>	<b>3,616,015</b>	-	-	-	-	-	-	<b>4,289,190</b>
<b>MASTER PLANS</b>									
3 North Beach Playground - Master Plan (Washington Square)	174,334	-	-	-	-	-	-	-	174,334
4 Stern Grove - Master Plan	966,268	38,825	-	-	-	-	-	-	1,005,093
8 Buena Vista Park - Master Plan	20,000	-	-	-	-	-	-	-	20,000
9 Garfield Square - Master Plan	29,245	-	-	-	-	-	-	-	29,245
<b>SUBTOTAL FOR MASTER PLANS</b>	<b>1,189,847</b>	<b>38,825</b>	-	-	-	-	-	-	<b>1,228,672</b>
<b>RENOVATION &amp; NEW CONSTRUCTION</b>									
1 Argonne Playground & Clubhouse	2,019,613	321,930	-	-	664,428	-	-	-	3,005,971
1 Rochambeau Playground & Clubhouse	1,680,020	317,863	-	-	-	4,000	-	-	2,001,883
Rossi Playground - Children's Play Structure	831,991	286,312	-	-	-	250,000	-	-	1,368,303
2 Alta Plaza Park - Children's Play Structure	332,016	18,942	-	38	25,000	-	-	441,815	817,812
2 Moscone Playground - Children's Play Structure	758,143	9,590	-	-	-	-	-	96,326	864,059
2 Moscone Recreation Center	1,513,441	161,275	4,101,210	-	2,067,176	-	-	-	7,843,103
2 Palace of Fine Arts - Historic Structure	1,643,449	698,326	-	-	3,451,250	1,200,000	-	6,097,987	13,091,012
2 Palace of Fine Arts Park - Landscape/Lagoon	504,414	154,048	-	-	1,803,170	-	-	1,314,870	3,776,502
3 Chinese Recreation Center-Seismic	344,466	-	-	-	-	-	-	112,975	457,441
3 Coit Tower Renovation	685,000	-	1,900,000	-	-	-	-	-	2,585,000
3 Fay House Stabilization	250,000	-	100,000	-	-	-	-	-	350,000
3 Fay Park - Garden	185,833	602,057	-	92,516	-	83,597	-	-	964,004
3 Helen Wills Park & Clubhouse	1,296,533	619,252	-	-	1,500,000	-	-	26,982	3,442,767
3 North Beach Playground - Pool & Clubhouse	3,433,701	695,132	-	-	-	125,254	-	5,609,231	9,863,318
3 St. Mary's Square	1,429,379	-	-	-	81,500	-	-	763,202	2,274,081
4 Great Highway Restroom Repair	1,822,792	-	-	-	-	-	-	509,043	2,331,835
4 Larsen Park & Playground	200,000	250,000	-	150,000	-	347,430	-	250,000	1,197,430
4 Larsen Park Sava Pool	1,546,457	-	10,429,847	-	-	4,107,672	-	-	16,083,976
4 McCoppin Square - Irrigation	-	13,556	-	-	-	452,744	-	-	466,300
4 Parkside Square-Children's Play Structure/Landscape	1,119,217	102,624	-	-	-	19,374	-	331,776	1,572,991
4 Pine Lake Park - Meadow	3,059,862	117,718	-	-	1,670,000	-	-	-	4,847,580
4 South Sunset Playground - Children's Play Structure	665,667	131,603	-	-	50,000	-	-	-	847,270
4 Stern Grove - Concert Meadow	384,831	-	-	-	-	-	-	-	384,831
4 West Sunset Playground - Fence Replacement	4,512	-	-	-	-	-	-	-	4,512
5 Alamo Square - Children's Play Structure	854,184	338,982	-	-	50,000	660	-	45,000	1,288,826
5 Hamilton Playground & Rec Center & Pool	915,311	443,599	16,249,294	-	-	250,000	-	-	17,858,204
5 Koshland Park	500,597	62,773	-	-	-	-	-	886,327	1,449,697
6 Boeddeker Park & Playground	300,000	338,832	-	646,000	4,943,000	250,000	-	209,274	6,687,106
6 Civic Center Garage Elevator	850,000	302,152	-	-	-	1,000,000	-	-	2,152,152
6 Franklin Square & Youngblood Coleman Fields	315,677	1,899,739	-	-	200,000	10,000	-	-	2,425,415
6 Hoff Street Park	669,744	638,833	-	-	-	-	-	-	1,308,577
6 SOMA Park (Victoria Manalo Draves Park)	1,546,877	429,039	-	-	1,679,000	250,000	371,147	-	4,276,063
7 Aptos Playground	2,888,086	161,000	-	-	-	800,794	-	-	3,849,880
7 J.P. Murphy Playground & Clubhouse	3,707,240	405,861	-	-	-	-	-	76,105	4,189,207
7 Junipero Serra Playground & Clubhouse	1,850,000	433,655	740,000	-	-	339,495	-	-	3,363,150
7 Lake Merced Improvement / Boathouse	200,000	-	335,000	-	-	-	-	-	535,000
7 Midtown Terrace Reservoir Top	5,000	33,792	-	-	-	-	-	-	38,792
7 Sunnyside Clubhouse & Playground	3,117,630	63,268	16,378	-	-	-	-	-	3,197,275
7 Sunnyside Clubhouse & Playground Phase II	617,399	81,806	10,302	-	-	-	-	-	709,506
7 West Portal Playground & Clubhouse	2,049,770	157,537	-	-	-	-	-	-	2,207,307
8 Buena Vista Park Landscape Imp.	43,838	34,276	2,408,368	-	-	-	-	55,924	2,542,406
8 Douglass Playground	249,290	11,370	-	-	-	-	-	-	260,660
8 Duboce Park - Harvey Milk Center	7,300,595	977,719	1,496,052	-	1,800,000	-	-	-	11,574,366
8 Eureka Valley Playground - Rec Center	3,700,550	2,085,888	-	-	-	-	-	-	5,786,438
8 Glen Park Playground - Canyon & Assessment	95,196	217,207	-	-	-	-	-	-	312,403
8 Mission Dolores Park - Children's Play Structure	670,661	-	191,096	-	-	248,480	-	2,439,930	3,550,167
8 Mission Dolores Park Playground- Clubhouse	24,326	-	-	-	-	-	-	-	24,326
8 Noe Courts Retaining Wall	157,324	-	-	-	-	-	-	-	157,324
8 Randall Museum - Grounds	1,308,013	-	-	124,351	-	-	-	526,505	1,958,869

**Program Budget Reports - Revenues as of December 31, 2014**

	2000 NP BONDS	OPEN SPACE FUNDS	REVENUE BONDS	GIFTS	GRANTS	GENERAL FUNDS	DOWNTOWN PARK FUNDS	OTHER CITY DEPT FUNDS	TOTAL ALL SOURCES
8 Randall Museum Renovation	300,000	-	-	197,247	5,477,193	-	-	-	5,974,440
8 Sunnyside Conservatory	992,532	173,829	-	-	-	3,039,468	-	-	4,205,829
8 Upper Noe Dog Park	66,031	2,268	-	-	-	-	-	-	68,299
8 Upper Noe Playground - Rec Center	10,524,619	126,875	-	-	-	700,000	-	-	11,351,494
8 Walter Haas Playground	1,302,000	411,191	-	-	-	-	-	-	1,713,191
9 24th Street Mini Park	282,935	689,172	-	-	79,567	-	-	-	1,051,674
9 Bernal Heights Park (Phase I)	103,937	556,525	-	-	-	-	-	-	660,462
9 Bernal Heights Park (Phase II)	21,167	342,606	-	-	-	-	-	-	363,773
9 Garfield Square-Children's Play Structure & Playfield	500,925	451,476	-	-	-	-	-	17,622	970,022
9 Holly Park	1,267,018	72,151	-	-	773,150	-	-	-	2,112,319
9 Mission Pool	86,743	(6)	-	-	-	-	-	764,072	850,810
9 Parque Ninos Unidos - Clubhouse	1,620,000	606,744	-	-	-	-	-	297,092	2,523,836
9 Rolph Park Playground & Clubhouse	2,343,423	131,522	-	-	-	817,712	-	-	3,292,657
9 St. Mary's Playground - Dog Park	114,097	-	-	-	-	-	-	-	114,097
9 St. Mary's Playground	312,559	50,000	2,816,138	-	-	-	-	-	3,178,697
10 Bayview Playground - Martin Luther King, Jr., Pool	706,539	-	-	-	-	-	-	9,270,981	9,977,521
10 Herz Playground - Coffman Pool	8,650,342	538,804	-	-	-	1,500,000	-	-	10,689,146
10 Joseph Lee Playground & Rec Center	8,453,327	318,426	-	-	500,000	699,961	-	-	9,971,714
10 Kelloch - Velasco Park	522,233	40,600	680,923	-	-	617,507	-	-	1,861,263
10 McLaren Park - Yosemite Marsh Renovation	151,980	4,844	-	-	150,716	321,029	-	-	628,570
10 Potrero del Sol	781,645	110,001	-	-	728,530	1,300,000	-	7,000	2,927,175
10 Visitacion Valley Greenway - Senior Park	347,607	64,187	-	-	98,039	-	-	-	509,833
10 Visitacion Valley Greenway - Tioga Lot	822,983	-	-	-	-	1,011,663	-	-	1,834,647
10 Visitacion Valley Greenway - Campbell/Rutland	166,420	236,812	-	-	492,500	-	-	35,750	931,481
10 Visitacion Valley Playground - Clubhouse	703,658	127,551	-	-	-	-	-	1,945,266	2,776,475
10 Youngblood-Coleman Playground - Clubhouse	48,180	373	-	-	-	-	-	-	48,554
11 Balboa Park - Master Plan	3,693	-	-	-	-	-	-	-	3,693
11 Balboa Park - Restroom	131,634	-	-	-	-	-	-	450,000	581,634
11 Balboa Park Improvements	100,000	195,711	-	1,390,895	-	900,000	-	-	2,586,606
11 Crocker Amazon Lighting	200,000	-	-	-	-	-	-	-	200,000
11 Crocker Amazon Playground - Children's Play Structure Phase I	5,000	274,434	-	-	-	87,027	-	-	366,460
11 Excelsior Playground	1,205,351	50,000	-	-	-	-	-	-	1,255,351
11 Geneva Car Barn Improvements	838,000	398,579	-	-	-	-	-	-	1,236,579
11 Lessing/Sears Mini Park	350,142	27,061	-	-	-	-	-	50,000	427,203
11 Minnie & Lovie Athletic Field	768,163	-	-	-	-	-	-	-	768,163
11 Oceanview Playground & Rec Center (Minnie & Lovie Rec Center)	11,473,375	585,852	-	-	2,707,243	939,085	-	-	15,705,555
<b>SUBTOTAL FOR RENOVATION &amp; NEW CONSTRUCTION</b>	<b>115,916,903</b>	<b>20,205,145</b>	<b>41,474,608</b>	<b>2,601,048</b>	<b>30,991,462</b>	<b>21,672,953</b>	<b>371,147</b>	<b>32,631,055</b>	<b>265,864,321</b>
<b>PROGRAM-WIDE SERVICES</b>									
Controller's Audit	884	-	-	-	-	-	-	-	884
Other Program Costs	28,619	-	-	-	-	-	-	-	28,619
Program Management	-	-	-	-	-	-	-	-	-
Master Neighborhood Bond	2,068,920	-	-	-	-	-	-	-	2,068,920
<b>PROGRAM RESERVE</b>	<b>-</b>	<b>-</b>	<b>900,300</b>	<b>-</b>	<b>-</b>	<b>-</b>	<b>-</b>	<b>-</b>	<b>900,300</b>
<b>SUBTOTAL FOR PROGRAM-WIDE SERVICES</b>	<b>2,098,424</b>	<b>0</b>	<b>900,300</b>	<b>0</b>	<b>0</b>	<b>0</b>	<b>0</b>	<b>0</b>	<b>2,998,724</b>
<b>GRAND TOTAL FOR REVENUES</b>	<b>119,878,348</b>	<b>23,859,985</b>	<b>42,374,908</b>	<b>2,601,048</b>	<b>30,991,462</b>	<b>21,672,953</b>	<b>371,147</b>	<b>32,631,055</b>	<b>274,380,906</b>

## Program Budget Reports - Expenditures as of December 31, 2014

Project	Category	Original/Baseline Budget	Current Approved Budget-OLF	Expended + Encumbered	
				All Sources 12/31/2014	2000 NP Bonds 12/31/2014
<b>ACTIVE PROJECTS</b>					
3	Coit Tower Renovation	Soft Costs	507,836	496,211	9,569
		Construction Costs	2,077,164	2,055,567	643,380
		<b>SUBTOTAL</b>	<b>2,585,000</b>	<b>2,551,779</b>	<b>652,949</b>
3	Fay House Stabilization	Soft Costs	350,000	0	0
		Construction Costs	0	0	0
		<b>SUBTOTAL</b>	<b>350,000</b>	<b>-</b>	<b>-</b>
4	Great Highway Restroom Repair	Soft Costs	697,879	488,530	52,788
		Construction Costs	1,633,957	1,484,616	1,462,210
		<b>SUBTOTAL</b>	<b>2,331,835</b>	<b>1,973,146</b>	<b>1,514,999</b>
4	Larsen Park and Playground	Soft Costs	465,499	255,387	0
		Construction Costs	731,931	732,411	200,000
		<b>SUBTOTAL</b>	<b>1,197,430</b>	<b>987,798</b>	<b>200,000</b>
6	Boeddeker Park and Playground	Soft Costs	1,000,811	303,609	31,680
		Construction Costs	5,686,295	5,638,224	64,479
		<b>SUBTOTAL</b>	<b>6,687,106</b>	<b>5,941,833</b>	<b>96,158</b>
6	Civic Center Garage Elevator	Soft Costs	1,640,283	1,225,970	11,559
		Construction Costs	511,869	511,869	511,869
		<b>SUBTOTAL</b>	<b>2,152,152</b>	<b>1,737,839</b>	<b>523,428</b>
6	Randall Museum Renovation	Soft Costs	5,846,834	952,658	33,963
		Construction Costs	127,606	75,814	0
		<b>SUBTOTAL</b>	<b>5,974,440</b>	<b>1,028,472</b>	<b>33,963</b>
11	Crocker Amazon Lighting	Soft Costs	200,000	183,567	183,567
		Construction Costs	0	0	0
		<b>SUBTOTAL</b>	<b>200,000</b>	<b>183,567</b>	<b>183,567</b>
11	Minnie and Lovie Athletic Field	Soft Costs	0	0	0
		Construction Costs	768,163	768,163	768,163
		<b>SUBTOTAL</b>	<b>768,163</b>	<b>768,163</b>	<b>768,163</b>
	<b>ACTIVE TOTAL</b>		<b>22,246,126</b>	<b>15,172,598</b>	<b>3,973,227</b>
<b>PROJECTS IN CLOSE-OUT</b>					
7	Lake Merced Improvement / Boathouse	Soft Costs	135,000	158,294	0
		Construction Costs	400,000	400,000	200,000
		<b>SUBTOTAL</b>	<b>535,000</b>	<b>558,294</b>	<b>200,000</b>
11	Balboa Park Improvements	Soft Costs	165,711	165,711	0
		Construction Costs	2,420,895	2,420,895	100,000
		<b>SUBTOTAL</b>	<b>2,586,606</b>	<b>2,586,606</b>	<b>100,000</b>
	<b>CLOSE-OUT TOTAL</b>		<b>-</b>	<b>535,000</b>	<b>200,000</b>
<b>COMPLETED PROJECTS</b>					
1	Argonne Playground & Clubhouse	Soft Costs	841,178	841,178	459,960
		Construction Costs	2,164,793	2,164,793	1,559,653
		<b>SUBTOTAL</b>	<b>2,673,000</b>	<b>3,005,971</b>	<b>2,019,613</b>
1	Rossi Playground - Children's Play Structure	Soft Costs	423,815	423,815	243,330
		Construction Costs	944,488	944,488	588,661
		<b>SUBTOTAL</b>	<b>1,392,500</b>	<b>1,368,303</b>	<b>831,991</b>
1	Rochambeau Playground & Clubhouse	Soft Costs	790,065	790,065	506,114
		Construction Costs	1,211,819	1,211,819	1,173,906
		<b>SUBTOTAL</b>	<b>1,954,000</b>	<b>2,001,883</b>	<b>1,680,020</b>
2	Alta Plaza Park - Children's Play Structure	Soft Costs	388,567	388,567	331,715
		Construction Costs	429,244	429,244	301
		<b>SUBTOTAL</b>	<b>819,000</b>	<b>817,812</b>	<b>332,016</b>
2	Palace of Fine Arts Park (incl Lagoon)	Soft Costs	1,117,147	1,117,147	493,310
		Construction Costs	2,659,355	2,659,355	11,104
		<b>SUBTOTAL</b>	<b>3,533,847</b>	<b>3,776,502</b>	<b>504,414</b>
2	Palace of Fine Arts - Historical Structure	Soft Costs	4,156,943	4,148,102	1,114,556
		Construction Costs	8,934,070	8,934,069	524,359
		<b>SUBTOTAL</b>	<b>14,808,416</b>	<b>13,091,012</b>	<b>1,638,915</b>
2	Moscone Playground - Children's Play Structure	Soft Costs	244,962	244,962	139,046
		Construction Costs	619,097	619,097	619,097
		<b>SUBTOTAL</b>	<b>839,455</b>	<b>864,059</b>	<b>758,143</b>
2	Moscone Recreation Center	Soft Costs	2,269,668	2,269,668	1,335,901
		Construction Costs	5,573,435	5,573,435	177,541
		<b>SUBTOTAL</b>	<b>8,000,000</b>	<b>7,843,103</b>	<b>1,513,441</b>
3	Chinese Recreation Center Feasibility	Soft Costs	453,176	453,176	340,201
		Construction Costs	4,265	4,265	4,265
		<b>SUBTOTAL</b>	<b>9,600,000</b>	<b>457,441</b>	<b>344,466</b>

## Program Budget Reports - Expenditures as of December 31, 2014

Project	Category	Original/Baseline Budget	Current Approved Budget-OLF	Expended + Encumbered	
				All Sources 12/31/2014	2000 NP Bonds 12/31/2014
3 Fay Park - Garden	Soft Costs		276,200	276,200	48,149
	Construction Costs		687,804	687,804	137,684
	<b>SUBTOTAL</b>	<b>866,000</b>	<b>964,004</b>	<b>964,004</b>	<b>185,833</b>
3 Helen Wills Park & Clubhouse	Soft Costs		789,758	772,758	64,803
	Construction Costs		2,653,008	2,653,008	1,231,730
	<b>SUBTOTAL</b>	<b>3,398,831</b>	<b>3,442,767</b>	<b>3,425,767</b>	<b>1,296,533</b>
3 North Beach Playground - Pool & Clubhouse	Soft Costs		1,897,200	1,897,200	48,782
	Construction Costs		7,966,117	7,966,117	3,384,919
	<b>SUBTOTAL</b>	<b>7,705,054</b>	<b>9,863,318</b>	<b>9,863,318</b>	<b>3,433,701</b>
3 North Beach Playground - Master Plan (WSQ)	Soft Costs		169,934	169,934	169,934
	Construction Costs		4,400	4,400	4,400
	<b>SUBTOTAL</b>	<b>45,000</b>	<b>174,334</b>	<b>174,334</b>	<b>174,334</b>
3 St. Mary's Square	Soft Costs		931,667	931,667	92,033
	Construction Costs		1,342,414	1,342,414	1,337,346
	<b>SUBTOTAL</b>	<b>2,388,927</b>	<b>2,274,081</b>	<b>2,274,081</b>	<b>1,429,379</b>
4 McCoppin Square - Irrigation	Soft Costs		124,436	124,436	0
	Construction Costs		341,864	341,864	0
	<b>SUBTOTAL</b>	<b>413,556</b>	<b>466,300</b>	<b>466,300</b>	<b>-</b>
4 Larsen Park Sava Pool	Soft Costs		2,576,457	2,565,351	1,495,353
	Construction Costs		13,507,519	13,475,372	51,104
	<b>SUBTOTAL</b>	<b>11,620,000</b>	<b>16,083,976</b>	<b>16,040,722</b>	<b>1,546,457</b>
4 Parkside Square - Children's Play Structure & Landscape	Soft Costs		374,445	374,445	167,573
	Construction Costs		1,198,546	1,198,546	951,644
	<b>SUBTOTAL</b>	<b>1,905,000</b>	<b>1,572,991</b>	<b>1,572,991</b>	<b>1,119,217</b>
4 Pine Lake Park - Meadow	Soft Costs		1,201,816	1,201,816	1,097,790
	Construction Costs		3,645,764	3,645,764	1,962,072
	<b>SUBTOTAL</b>	<b>5,454,000</b>	<b>4,847,580</b>	<b>4,847,580</b>	<b>3,059,862</b>
4 South Sunset Playground - Children's Play Structure	Soft Costs		213,398	213,398	69,461
	Construction Costs		633,872	633,872	596,206
	<b>SUBTOTAL</b>	<b>812,802</b>	<b>847,270</b>	<b>847,270</b>	<b>665,667</b>
4 Stern Grove - Master Plan	Soft Costs		990,526	990,526	951,701
	Construction Costs		14,567	14,567	14,567
	<b>SUBTOTAL</b>	<b>1,015,226</b>	<b>1,005,093</b>	<b>1,005,093</b>	<b>966,268</b>
4 Stern Grove - Concert Meadow	Soft Costs		383,831	383,831	383,831
	Construction Costs		1,000	1,000	1,000
	<b>SUBTOTAL</b>	<b>385,000</b>	<b>384,831</b>	<b>384,831</b>	<b>384,831</b>
4 West Sunset Playground - Fence Replacement	Soft Costs		4,512	4,512	4,512
	Construction Costs		0	0	0
	<b>SUBTOTAL</b>	<b>4,512</b>	<b>4,512</b>	<b>4,512</b>	<b>4,512</b>
5 Alamo Square - Children's Play Structure	Soft Costs		338,934	338,934	71,784
	Construction Costs		949,893	949,893	782,400
	<b>SUBTOTAL</b>	<b>1,286,665</b>	<b>1,288,826</b>	<b>1,288,826</b>	<b>854,184</b>
5 Hamilton Playground & Rec Center & Pool	Soft Costs		4,193,208	4,193,208	844,189
	Construction Costs		13,664,996	13,664,996	71,121
	<b>SUBTOTAL</b>	<b>14,168,711</b>	<b>17,858,204</b>	<b>17,858,204</b>	<b>915,311</b>
5 Koshland Park	Soft Costs		480,890	480,890	147,454
	Construction Costs		968,807	968,807	353,143
	<b>SUBTOTAL</b>	<b>1,320,514</b>	<b>1,449,697</b>	<b>1,449,697</b>	<b>500,597</b>
6 Franklin Square & Youngblood Coleman Field	Soft Costs		575,078	575,078	314,673
	Construction Costs		1,850,337	1,850,337	1,003
	<b>SUBTOTAL</b>	<b>2,748,000</b>	<b>2,425,415</b>	<b>2,425,415</b>	<b>315,677</b>
6 Hoff Street Park	Soft Costs		300,697	300,697	151,602
	Construction Costs		1,007,880	1,007,880	518,142
	<b>SUBTOTAL</b>	<b>1,351,327</b>	<b>1,308,577</b>	<b>1,308,577</b>	<b>669,744</b>
6 SOMA Park (Victoria Manalo Draves Park)	Soft Costs		1,304,831	916,163	455,607
	Construction Costs		2,971,232	2,971,232	1,091,270
	<b>SUBTOTAL</b>	<b>4,460,297</b>	<b>4,276,063</b>	<b>3,887,395</b>	<b>1,546,877</b>
7 Aptos Playground	Soft Costs		630,933	630,933	534,763
	Construction Costs		3,218,947	3,218,947	2,353,323
	<b>SUBTOTAL</b>	<b>2,858,552</b>	<b>3,849,880</b>	<b>3,849,880</b>	<b>2,888,086</b>
7 Balboa Park - Restroom	Soft Costs		190,579	190,579	131,634
	Construction Costs		391,055	391,055	0
	<b>SUBTOTAL</b>	<b>583,634</b>	<b>581,634</b>	<b>581,634</b>	<b>131,634</b>
7 Hawk Hill - Acquisition	Soft Costs		0	0	0
	Construction Costs		0	0	0
	Acquisition		3,369,655	3,369,655	345,000
	<b>SUBTOTAL</b>	<b>3,369,655</b>	<b>3,369,655</b>	<b>3,369,655</b>	<b>345,000</b>

## Program Budget Reports - Expenditures as of December 31, 2014

Project	Category	Original/Baseline Budget	Current Approved Budget-OLF	Expended + Encumbered	
				All Sources 12/31/2014	2000 NP Bonds 12/31/2014
7 J.P. Murphy Playground & Clubhouse	Soft Costs		1,267,468	1,267,468	1,002,111
	Construction Costs		2,921,739	2,921,739	2,705,130
	<b>SUBTOTAL</b>	<b>3,359,349</b>	<b>4,189,207</b>	<b>4,189,207</b>	<b>3,707,240</b>
7 Junipero Serra Playground & Clubhouse	Soft Costs		1,068,358	1,068,358	533,120
	Construction Costs		2,294,792	2,294,792	1,316,880
	<b>SUBTOTAL</b>	<b>2,790,000</b>	<b>3,363,150</b>	<b>3,363,150</b>	<b>1,850,000</b>
7 Sunnyside Clubhouse & Playground Phases I & II	Soft Costs		969,739	969,739	814,364
	Construction Costs		2,937,042	2,936,440	2,920,664
	<b>SUBTOTAL</b>	<b>3,960,500</b>	<b>3,906,781</b>	<b>3,906,180</b>	<b>3,735,028</b>
7 West Portal Playground & Clubhouse	Soft Costs		634,740	634,740	632,487
	Construction Costs		1,572,567	1,572,567	1,417,283
	<b>SUBTOTAL</b>	<b>2,222,531</b>	<b>2,207,307</b>	<b>2,207,307</b>	<b>2,049,770</b>
8 Buena Vista Park Landscape Imp.	Soft Costs		672,535	672,535	43,838
	Construction Costs		1,869,870	1,869,870	0
	<b>SUBTOTAL</b>	<b>2,356,760</b>	<b>2,542,406</b>	<b>2,542,406</b>	<b>43,838</b>
8 Douglass Playground	Soft Costs		260,660	260,660	249,290
	Construction Costs		0	0	0
	<b>SUBTOTAL</b>	<b>260,800</b>	<b>260,660</b>	<b>260,660</b>	<b>249,290</b>
8 Duboce Park - Harvey Milk Center	Soft Costs		2,585,566	2,585,566	960,858
	Construction Costs		8,988,799	8,988,799	6,339,738
	<b>SUBTOTAL</b>	<b>9,460,000</b>	<b>11,574,366</b>	<b>11,574,366</b>	<b>7,300,595</b>
8 Eureka Valley Playground - Rec Center	Soft Costs		1,836,392	1,836,392	112,060
	Construction Costs		3,950,046	3,950,046	3,588,490
	<b>SUBTOTAL</b>	<b>5,894,619</b>	<b>5,786,438</b>	<b>5,786,438</b>	<b>3,700,550</b>
8 Glen Park Playground - Canyon & Assessment	Soft Costs		312,403	312,403	95,196
	Construction Costs		0	0	0
	<b>SUBTOTAL</b>	<b>200,000</b>	<b>312,403</b>	<b>312,403</b>	<b>95,196</b>
8 Noe Courts Retaining Wall	Soft Costs		55,707	55,707	55,707
	Construction Costs		101,618	101,618	101,618
	<b>SUBTOTAL</b>	<b>161,000</b>	<b>157,324</b>	<b>157,324</b>	<b>157,324</b>
8 Mission Dolores Park - Clubhouse	Soft Costs		24,326	24,326	24,326
	Construction Costs		0	0	0
	<b>SUBTOTAL</b>	<b>27,435</b>	<b>24,326</b>	<b>24,326</b>	<b>24,326</b>
8 Mission Dolores Park Playground	Soft Costs		525,259	525,259	224,726
	Construction Costs		3,024,908	3,024,908	445,935
	<b>SUBTOTAL</b>	<b>250,000</b>	<b>3,550,167</b>	<b>3,550,167</b>	<b>670,661</b>
8 Randall Museum - Grounds	Soft Costs		397,920	397,920	8,052
	Construction Costs		1,560,949	1,560,949	1,299,961
	<b>SUBTOTAL</b>	<b>2,163,618</b>	<b>1,958,869</b>	<b>1,958,869</b>	<b>1,308,013</b>
8 Sunnyside Conservatory	Soft Costs		1,452,173	1,447,948	985,049
	Construction Costs		2,753,655	2,753,034	7,483
	<b>SUBTOTAL</b>	<b>3,600,000</b>	<b>4,205,829</b>	<b>4,200,982</b>	<b>992,532</b>
8 Upper Noe Dog Park	Soft Costs		0	0	0
	Construction Costs		68,299	68,299	66,031
	<b>SUBTOTAL</b>	<b>95,178</b>	<b>68,299</b>	<b>68,299</b>	<b>66,031</b>
8 Upper Noe Playground - Rec Center	Soft Costs		2,947,536	2,947,536	2,158,159
	Construction Costs		8,403,958	8,403,958	8,366,460
	<b>SUBTOTAL</b>	<b>10,493,220</b>	<b>11,351,494</b>	<b>11,351,494</b>	<b>10,524,619</b>
8 Walter Haas Playground	Soft Costs		218,810	218,810	2,000
	Construction Costs		1,494,382	1,494,382	1,300,000
	<b>SUBTOTAL</b>	<b>1,859,150</b>	<b>1,713,191</b>	<b>1,713,191</b>	<b>1,302,000</b>
9 24th Street Mini Park	Soft Costs		285,892	285,892	161,571
	Construction Costs		765,781	765,781	121,364
	<b>SUBTOTAL</b>	<b>1,050,000</b>	<b>1,051,674</b>	<b>1,051,674</b>	<b>282,935</b>
9 Bernal Heights Park (Phases I)	Soft Costs		280,205	280,205	101,057
	Construction Costs		380,257	380,257	2,880
	<b>SUBTOTAL</b>	<b>718,691</b>	<b>660,462</b>	<b>660,462</b>	<b>103,937</b>
9 Mission Pool	Soft Costs		245,903	245,903	30,589
	Construction Costs		604,907	604,907	56,154
	<b>SUBTOTAL</b>	<b>707,738</b>	<b>850,810</b>	<b>850,810</b>	<b>86,743</b>
9 Bernal Heights Park (Phases II)	Soft Costs		118,515	118,515	21,167
	Construction Costs		245,258	245,258	0
	<b>SUBTOTAL</b>	<b>331,309</b>	<b>363,773</b>	<b>363,773</b>	<b>21,167</b>
9 Garfield Square - Master Plan	Soft Costs		29,245	29,245	29,245
	Construction Costs		0	0	0
	<b>SUBTOTAL</b>	<b>50,000</b>	<b>29,245</b>	<b>29,245</b>	<b>29,245</b>
9 Garfield Square - Children's Playstructure & Field	Soft Costs		279,073	279,073	239,325
	Construction Costs		690,949	690,949	261,600

## Program Budget Reports - Expenditures as of December 31, 2014

Project	Category	Original/Baseline Budget	Current Approved Budget-OLF	Expended + Encumbered	
				All Sources 12/31/2014	2000 NP Bonds 12/31/2014
	<b>SUBTOTAL</b>	<b>1,042,824</b>	<b>970,022</b>	<b>970,022</b>	<b>500,925</b>
9 Holly Park	Soft Costs		503,390	503,390	431,239
	Construction Costs		1,608,929	1,608,929	835,779
	<b>SUBTOTAL</b>	<b>2,101,090</b>	<b>2,112,319</b>	<b>2,112,319</b>	<b>1,267,018</b>
9 Parque Ninos Unidos - Clubhouse	Soft Costs		747,456	747,456	20,000
	Construction Costs		1,776,380	1,776,380	1,600,000
	<b>SUBTOTAL</b>	<b>2,550,337</b>	<b>2,523,836</b>	<b>2,523,836</b>	<b>1,620,000</b>
9 Rolph Park Playground & Clubhouse	Soft Costs		872,336	872,336	770,540
	Construction Costs		2,420,321	2,420,321	1,572,883
	<b>SUBTOTAL</b>	<b>3,100,100</b>	<b>3,292,657</b>	<b>3,292,657</b>	<b>2,343,423</b>
9 St. Mary's Playground - Dog Park	Soft Costs		114,097	114,097	114,097
	Construction Costs		0	0	0
	<b>SUBTOTAL</b>	<b>110,698</b>	<b>114,097</b>	<b>114,097</b>	<b>114,097</b>
9 St. Mary's Playground	Soft Costs		850,178	746,645	311,509
	Construction Costs		2,328,519	2,032,617	1,050
	<b>SUBTOTAL</b>	<b>1,500,000</b>	<b>3,178,697</b>	<b>2,779,262</b>	<b>312,559</b>
10 Bayview Playground - MLK Jr., Pool	Soft Costs		2,116,388	2,116,388	402,673
	Construction Costs		7,861,133	7,861,133	303,866
	<b>SUBTOTAL</b>	<b>9,945,000</b>	<b>9,977,521</b>	<b>9,977,521</b>	<b>706,539</b>
10 Esprit Park Landscaping & Improvements	Soft Costs		672,035	672,035	80,675
	Construction Costs		0	0	0
	<b>SUBTOTAL</b>	<b>647,080</b>	<b>672,035</b>	<b>672,035</b>	<b>80,675</b>
10 Herz Playground - Coffman Pool	Soft Costs		2,517,683	2,517,683	1,998,878
	Construction Costs		8,171,463	8,171,463	6,651,464
	<b>SUBTOTAL</b>	<b>8,675,623</b>	<b>10,689,146</b>	<b>10,689,146</b>	<b>8,650,342</b>
10 Joseph Lee Playground & Rec Center	Soft Costs		2,917,927	2,917,927	2,068,069
	Construction Costs		7,053,788	7,053,788	6,385,258
	<b>SUBTOTAL</b>	<b>9,791,912</b>	<b>9,971,714</b>	<b>9,971,714</b>	<b>8,453,327</b>
10 Kelloch - Velasco Park	Soft Costs		544,441	513,867	191,009
	Construction Costs		1,316,823	1,272,855	256,683
	<b>SUBTOTAL</b>	<b>2,222,500</b>	<b>1,861,263</b>	<b>1,786,722</b>	<b>447,692</b>
10 McLaren Park - Acquisition	Soft Costs		0	0	0
	Construction Costs		0	0	0
	Acquisition		247,500	247,500	247,500
	<b>SUBTOTAL</b>	<b>238,651</b>	<b>247,500</b>	<b>247,500</b>	<b>247,500</b>
10 McLaren Park - Yosemite Marsh	Soft Costs		293,810	293,810	112,612
	Construction Costs		334,760	334,760	39,368
	<b>SUBTOTAL</b>	<b>306,000</b>	<b>628,570</b>	<b>628,570</b>	<b>151,980</b>
10 Potrero del Sol	Soft Costs		499,755	493,848	382,273
	Construction Costs		2,427,421	2,427,421	399,372
	<b>SUBTOTAL</b>	<b>2,010,302</b>	<b>2,927,175</b>	<b>2,921,269</b>	<b>781,645</b>
10 Visitacion Valley Greenway(RT)-Campbell/Rutland Ma	Soft Costs		297,375	297,375	151,083
	Construction Costs		634,106	634,106	15,337
	<b>SUBTOTAL</b>	<b>855,000</b>	<b>931,481</b>	<b>931,481</b>	<b>166,420</b>
10 Visitacion Valley Greenway(RT)- Senior Park	Soft Costs		508,306	508,306	346,080
	Construction Costs		1,527	1,527	1,527
	<b>SUBTOTAL</b>	<b>476,438</b>	<b>509,833</b>	<b>509,833</b>	<b>347,607</b>
10 Visitacion Valley Playground - Clubhouse	Soft Costs		719,082	719,082	132,347
	Construction Costs		2,057,393	2,057,393	571,311
	<b>SUBTOTAL</b>	<b>2,690,011</b>	<b>2,776,475</b>	<b>2,776,475</b>	<b>703,658</b>
10 Visitacion Valley Greenway(RT)-Tioga Lot	Soft Costs		424,022	424,022	181,474
	Construction Costs		1,410,625	1,410,625	641,509
	<b>SUBTOTAL</b>	<b>2,053,860</b>	<b>1,834,647</b>	<b>1,834,647</b>	<b>822,983</b>
11 Crocker Amazon Playground - Children's Play Structur	Soft Costs		209,024	209,024	5,000
	Construction Costs		157,436	157,436	0
	<b>SUBTOTAL</b>	<b>1,745,793</b>	<b>366,460</b>	<b>366,460</b>	<b>5,000</b>
11 Excelsior Playground	Soft Costs		84,498	84,498	34,498
	Construction Costs		1,170,852	1,170,852	1,170,852
	<b>SUBTOTAL</b>	<b>1,745,793</b>	<b>1,255,351</b>	<b>1,255,351</b>	<b>1,205,351</b>
11 Geneva Car Barn Improvements	Soft Costs		1,190,507	1,186,836	837,863
	Construction Costs		46,073	46,073	0
	<b>SUBTOTAL</b>	<b>1,378,000</b>	<b>1,236,579</b>	<b>1,232,909</b>	<b>837,863</b>
11 Lessing/Sears Mini Park	Soft Costs		285,492	285,492	208,730
	Construction Costs		141,711	141,711	141,411
	<b>SUBTOTAL</b>	<b>427,203</b>	<b>427,203</b>	<b>427,203</b>	<b>350,142</b>
11 Oceanview Playground & Rec Center	Soft Costs		4,598,139	4,598,139	3,008,972
	Construction Costs		11,107,416	11,107,416	8,464,402
	<b>SUBTOTAL</b>	<b>15,207,643</b>	<b>15,705,555</b>	<b>15,705,555</b>	<b>11,473,375</b>

## Program Budget Reports - Expenditures as of December 31, 2014

Project	Category	Original/Baseline Budget	Current Approved Budget-OLF	Expended + Encumbered	
				All Sources 12/31/2014	2000 NP Bonds 12/31/2014
<b>COMPLETED TOTAL</b>		234,615,237	245,903,412	244,956,647	111,947,884
<b><u>CANCELED PROJECTS</u></b>					
7	Midtown Terrace Reservoir Top				
	Soft Costs		38,792	38,792	5,000
	Construction Costs		0	0	0
	<b><i>SUBTOTAL</i></b>	<b>1,561,240</b>	<b>38,792</b>	<b>38,792</b>	<b>5,000</b>
8	Balboa Park - Master Plan				
	Soft Costs		3,693	3,693	3,693
	Construction Costs		0	0	0
	<b><i>SUBTOTAL</i></b>	<b>15,000</b>	<b>3,693</b>	<b>3,693</b>	<b>3,693</b>
8	Buena Vista Park - Master Plan				
	Soft Costs		20,000	8,899	8,899
	Construction Costs		0	0	0
	<b><i>SUBTOTAL</i></b>	<b>150,000</b>	<b>20,000</b>	<b>8,899</b>	<b>8,899</b>
10	Youngblood-Coleman Playground - Clubhouse				
	Soft Costs		48,554	48,554	48,180
	Construction Costs		0	0	0
	<b><i>SUBTOTAL</i></b>	<b>48,912</b>	<b>48,554</b>	<b>48,554</b>	<b>48,180</b>
<b>CANCELED TOTAL</b>		<b>1,775,152</b>	<b>111,039</b>	<b>99,937</b>	<b>65,772</b>
<b>PROJECT TOTAL</b>		<b>236,390,389</b>	<b>271,382,183</b>	<b>263,374,082</b>	<b>116,286,883</b>
<b><u>PROGRAM WIDE SERVICES</u></b>					
	Controller's Audit		884	884	884
	Other Program Costs		28,619	28,619	28,619
	Program Management Cost		0	0	0
	Master Neighborhood Bond		2,068,920	1,942,429	1,942,429
	PROGRAM RESERVE		900,300	44,333	0
<b>PROGRAM WIDE TOTAL</b>			<b>2,998,724</b>	<b>2,016,266</b>	<b>1,971,932</b>
<b>PROGRAM TOTAL</b>		<b>236,390,389</b>	<b>274,380,906</b>	<b>265,390,348</b>	<b>118,258,815</b>